



Protecting you for life's best moments.

**POWERED AND SUPPLIED AIR
RESPIRATORY PROTECTION SOLUTIONS
PRODUCT CATALOGUE**

gvs-rpb.com



OUR STORY

**We are the respiratory protection specialists,
dedicated to protecting you for life’s best moments.**

Protecting people drives everything we do at RPB. For over four decades, we have serviced the industrial market, working with world leading engineers, constantly pushing creative boundaries with new technology that advances our functional capabilities, seeking input from our end users, and refining our range to create the world’s best respirators.

As our passion for protecting people continues to grow, we have extended our product range and branched into

new industries, sharing our respiratory protection expertise to better the lives of more people. Through this growth, we have taken the next step in our journey, becoming part of the GVS Group, a global manufacturer of filtration devices for the Medical & Life Science, Energy & Mobility, and Health & Safety industries. By teaming up with dedicated filtration specialists, this enables us to expand the possibilities of what personal protection has to offer as we continue to shape the future of respiratory protection.



GLOBAL NETWORK

Contact one of our locations or visit gvs-rpb.com

Europe:
+39 051 6176311, gvs@gvs.com

United Kingdom:
+44 (0) 1524 847600, gvsuk@gvs.com

Romania:
+40 244 463044, gvsromania@gvs.com

Turkey:
+90 216 504 47 67, gvsturkey@gvs.com

Russia:
+7 495 0045077, gvsrussia@gvs.com

USA:
+1 866 7361250, gvsnasafety@gvs.com
+1-866-494-4599, sales@rpbsafety.com

México:
+52 81 2282 9003, gvmex@gvs.com

Brasil:
+55 19 38797200, gvs@gvs.com.br

Argentina:
+54 11 49889041, gvsarg@gvs.com

China:
+86 512 6661 9880, gvschina@gvs.com

Japan:
+81 3 5937 1447, gvsjapan@gvs.com

Korea:
+82 31 563 9873, gvsukorea@gvs.com

New Zealand:
+64 3 357 1761, sales@rpbsafety.com

Copyright ©2021 RPB IP, LLC. All rights reserved. All materials contained in this publication are protected by United States copyright law and may not be reproduced, distributed, transmitted, displayed, published or broadcast without the prior written permission of RPB IP, LLC. You may not alter or remove any trademark, copyright or other notice from copies of the content.

All trademarks, service marks, and logos used in this publication, both registered and unregistered, are the trademarks, service marks, or logos of their respective owners. The green and gray color combination is a registered trademark of RPB IP, LLC. All rights in the RPB Intellectual Property contained in this publication, including copyright, trademarks, service marks, trade secret, and patent rights are reserved. RPB Intellectual Property means any patent, patented articles, patent applications, designs, industrial designs, copyrights, software, source code, database rights, moral rights, inventions, techniques, technical data, trade secrets, know-how, brands, trademarks, trade names, slogans, logos, and any other common law and proprietary rights, whether registered or unregistered anywhere in the world, that are owned by, developed in whole or in part by, or licensed by RPB IP, LLC. Tychem®, Nomex®, DuPont® and Kevlar® are registered trademarks of E.I. du Pont de Nemours and Company or its affiliates.

While the Information contained within this catalog is considered to be true and correct at the date of publication, changes in circumstances after the time of publication may impact on the accuracy of the Information. The Information may change without notice and RPB IP LLC is not in any way liable for the accuracy of any information printed and stored or in any way interpreted and used by a user.

Edition 1.2

PX5® PAPR

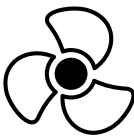
**RESPIRATORY PROTECTION
REIMAGINED**



Protecting you for life's best moments.



PX5® PAPR



RESPIRATORY PROTECTION REIMAGINED

The RPB PX5 changes the way people experience clean filtered air across multiple industries – from medical and chemical settings, through to the profoundly harsh environments of foundries.

The PX5 is the result of years of product refinement, designed with new functional capabilities that increase your ability to perform, while enhancing your experience of comfort. The PX5 redefines what it means to be a powered air purifying respirator.

Weighing just 1.16kg with the HEPA filter fitted, and between 1.65kg and 1.7kg with a gas filter fitted, the PX5 allows you to get more out of your day by reducing the effects of fatigue. Through strategically distributing its weight with its vertical mounting position and support from our flexi-belt system, the PX5 contours to your body for maximized comfort and stability.

With sleek considered surfaces, quick release mount lock system and certification for IP65 in use and IP67 with cleaning kit in place, the PX5 enables you to efficiently disinfect the unit, reducing downtime and ensuring the system is ready to protect you again.

The PX5 offers three fan speed settings so you can adjust the airflow to suit your personal preferences and the type of environment/application you're working in, these include 170, 210 & 240lpm.

The PX5 is truly the hallmark of powered air purifying respirator capabilities and their practical application.

CE 2797
UK 0086

EN12941:1998 +A2:2008
TH3/2/1 P R SL
RESPIRATORY PROTECTION
Only in conjunction with approved respirator.
See instruction manual for protection levels.

US and Global patents pending.

USER INTERFACE

Intuitive LED user interface indicates airflow, fan speed and battery level.

gvs-rpb.com



Weighing just 1.16kg with the HEPA filter fitted, and between 1.65kg and 1.7kg with gas filter fitted, the sleek, lightweight, compact design maximizes your experience of comfort.

The PX5 unit attaches to our flexi-belt system (fitted with the decon easy clean belt) via our intuitive vertical mount lock system. The unit easily removes for quick and simple decontamination process. Backpack option available for applications that require a greater range of movement and work across varied angles.



*From local and globally sourced components.

Ingress Protection - With a completely sealed housing, the PX5 has been certified to IP65 rating in use and certified to IP67 rating with cleaning kit in place.

Filter Safety - The filter door cannot mount to the unit unless a filter is fixed in place.

HEPA filter - removes up to 99.97% of particulates down to 0.12 microns. Gas filters protect against organic vapor exposure. Replace the pre-filter daily to extend the life of the main filter.



A2P, ABE1P & ABEK1P Filters



HEPA Filter

Visual, audible and vibrating alarms alert you when the battery level is low, or when airflow falls below the minimum requirements due to the filter needing replacing or when airflow is obstructed.

Sealed inside the unit during operation, the long-life lithium-ion battery is protected from moisture when decontaminating and will not disconnect or bump off while operating.



ISO9001
CERTIFIED COMPANY

PX5® PAPR PACKAGES

PX5® PAPR - PACKAGES | AIR MONITORING FILTRATION & SUPPLY

- PX5® PAPR Easy Clean Starter Pack**
- PX5 Powered Air Purifying Respirator (PAPR)
 - 2" Easy Clean Belt Assembly
 - Belt Support Mount
 - Rechargeable Battery and Charging Bank (EU and UK plug)
 - Flow Tester
 - 1x HEPA (P) Filter
 - 1x pack of Pre-filters (pk 10)
- (Breathing Tube ordered separately).
Part # 03-801-EUUK



AIR MONITORING FILTRATION & SUPPLY | PX5® PAPR - PACKAGES

PX5® PAPR PACKAGES

- PX5® PAPR Industrial Starter Pack**
- PX5 Powered Air Purifying Respirator (PAPR)
 - 2" Flame Retardant Belt Assembly
 - Belt Support Mount
 - Rechargeable Battery and Charging Bank (EU and UK plug)
 - Flow Tester
 - 1x HEPA (P) filter
 - 1x Spark Arrestor
 - 1x pack of Pre-filters (pk 10)
- (Breathing Tube ordered separately).
- Part # 03-801-FR-EUUK



- PX5® PAPR Starter Pack for Gas Filters**
- PX5 Powered Air Purifying Respirator (PAPR)
 - Gas Filter Door
 - 2" Flame Retardant Belt Assembly
 - Belt Support Mount
 - Rechargeable Battery and Charging Bank (EU and UK plug)
 - Flow Tester
 - 1x Spark Arrestor
 - 1x pack of Pre-filters (pk 10)
- (Breathing Tube & Gas Filter ordered separately).
- Part # 03-802-FR-EUUK



PX5® PAPR PARTS

More parts available on request.

HEPA Filter
Part # 03-892



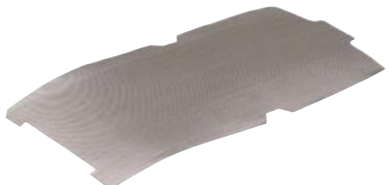
Pre-filter (pk 10)
Part # 03-890



Combination HEPA A2P
Gas Filter
Part # 03-893-A2
Combination HEPA ABE1P
Gas Filter
Part # 03-894-ABE
Combination HEPA ABEK1P
Gas Filter
Part # 03-895-ABEK



Spark Arrestor
Part # 03-891



Complete Charger Kit
Part # 03-851-EUUK



Battery
Part # 03-855



High Capacity Battery
Part # 03-856



FR Backpack Assembly
Part # 03-822-FR



Short Breathing Tube
for Backpack Assembly
Part # 04-841



PAPR Breathing Tube
(for Z-Link®, Z4®, T-Link® and T200®)
Part # 04-831



Easy Clean Backpack Assembly
Part # 03-822-DC



Belt Support Mount
Part # 03-811



PX5® PAPR - PARTS | 2 | AIR MONITORING FILTRATION & SUPPLY

AIR MONITORING FILTRATION & SUPPLY | 2 | PX5® PAPR - PARTS

Z-LINK®

**MULTI-PURPOSE
RESPIRATORY PROTECTION**



Protecting you for life's best moments.

Z-LINK®



MULTI-PURPOSE RESPIRATORY PROTECTION

The RPB Z-Link is the most versatile multi-purpose respirator on the market. Designed to be resilient in harsh industrial applications while practical to meet the demands of healthcare and life science settings. The Z-Link has been designed with your comfort and functionality in mind, ensuring no matter where you're working, you'll be protected for your life's best moments.

Visibility has been at the forefront of the Z-Link's design, boasting a large visor that enables you to see with exceptional downward and peripheral vision. This system also combines with a visor that hinges open so you can easily communicate with your team, as and when necessary.

Fitted with a padded headliner and head suspension system, the Z-link's weight is evenly distributed, relieving you of aches and strains on your neck to enhance your experience of comfort. Being fully adjustable ensures the respirator fits securely to all head sizes, maximizing stability and always moving with your head. Our innovative design ensures you have a greater range of movement, so you can focus on your job at hand. The Z-Link is everything you need in a respirator.

The Z-Link is certified to the standards below:

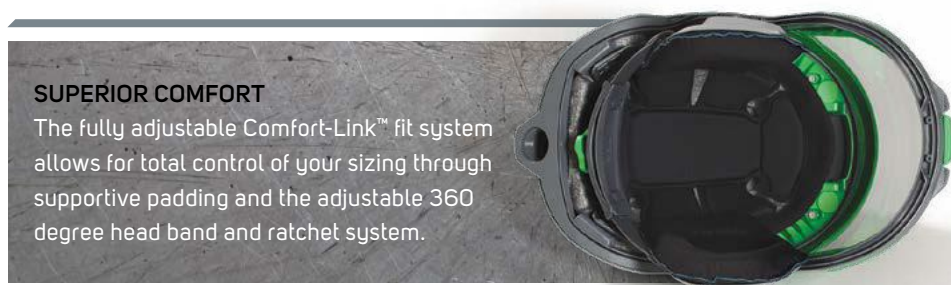
CE 2797
UK 0086

EN14594:2005 3B
EN12941:1998
+A2:2008 TH3/2/1 P R SL
RESPIRATORY PROTECTION
See instruction manual for protection levels.

EN352-3:2002
HEARING PROTECTION
Only in conjunction with 10-533 earmuffs.

EN397:2012+A1:2012
HARD HAT PROTECTION
Conforms to impact and optional classes.

EN166:2001 CLASS 1 BT 9 3
EYE & FACE PROTECTION



SUPERIOR COMFORT

The fully adjustable Comfort-Link™ fit system allows for total control of your sizing through supportive padding and the adjustable 360 degree head band and ratchet system.

gvs-rpb.com

ISO9001
CERTIFIED COMPANY

Visor hinges open for easy communication with team (outside of respiratory hazards).

Air flow and distribution is fully adjustable with the air deflector system to suit your personal preference.

Optimum vision and high velocity impact protection with large optically-clear safety lens (replaceable spare part). Choice of 5 anti-fog and scratch resistant ANSI Z87+ (EN166) lenses: Premium Clear, Green Tint (Shade 5), Yellow Tint, Black Tint, and Mirror Tint.

ANSI Z89.1 certified head protection (EN397).

Padded interior with adjustable ratchet system ensures a perfect customized fit that supports movement, increasing comfort and productivity.

Three cape materials available:
Tychem® 2000,
Tychem® 4000
or Zytex® FR.

Fixed jaw ensures secure cape attachment.

Vision-Link™ light mount point.



From local and globally sourced components.

Visor shown open for marketing purposes only.
Do not open your visor in the work environment.



Protecting you for life's best moments.

Z-LINK+®



DIVERSE FUNCTIONALITY

The Z-Link+ has been designed to give you all the freedom and comfort that you receive with the Z-Link but extends the respirators capabilities, giving you eye protection so you can weld without the need for additional systems.

The Z-Link+ weld visor clips on directly to your main visor so you can seamlessly weld with optically clear vision, then lift up the visor to check welds and instantly begin grinding again. With the large RPB ADF lens with a 1/1/1 optical quality rating, this guarantees uniform shading and distortion free vision, while allowing you to work safely and more comfortably for longer across different angles.

In addition to the Z-Link certifications, the Z-Link+ is certified to the standards below:

CE 2797
UK 0086
EN14594:2005 3B
EN12941:1998
+A2:2008 TH3/2/1 P R SL
RESPIRATORY PROTECTION
See instruction manual for protection levels.
EN352-3:2002
HEARING PROTECTION
Only in conjunction with 18-533 earmuffs.
EN397:2012+A1:2012
HARD HAT PROTECTION
EN166:2001 CLASS 1 BT 9 3
EYE & FACE PROTECTION
EN379:2003
WELDING EYE PROTECTION



REMOVABLE WELDING VISOR

The Z-Link+ weld visor clips directly onto your main visor, enabling you to lift up your visor to check welds and to instantly begin grinding. For extended periods of grinding the visor is easily removed at the hinge points.

gvs-rpb.com

ISO9001
CERTIFIED COMPANY

The weld visor can be easily removed for extended periods where just grinding is required.

The Z-Link+ weld visor weighs only 13.8 ounces (390g) including ADF.

Large welding auto darkening filter with a 1/1/1 rating. Variable auto darkening lens (shades 3, 5, or 9-13). Replaceable impact and ADF lenses for ease of maintenance.

Z-Link+ weld visor attaches directly onto to the main grinding visor, enabling you to seamlessly switch from welding to grinding while maintaining respiratory protection.



*From local and globally sourced components.



Protecting you for life's best moments.

Z-LINK® RADIANT HEAT



HEAT DEFENSE

The RPB Radiant Heat kit transforms your Z-Link respirator into a complete protective system for high heat environments. Utilizing the Z-Link headtop, experience unrivaled comfort as heat is deflected away from you and air continuously circulates throughout the headtop so you can work safer for longer.

The Radiant Heat kit features a large, gold coated visor that reflects heat off you, keeping your body temperature down, while allowing you to see all of your environment with an uncompromised field of view. With flame resistant and reflective materials this protects you from sparks and splashes while providing additional relief from the heat.

Enhance your experience of safety and productivity in high heat environments by using protection that revolutionizes the way you work with the RPB Z-Link Radiant Heat.

The Z-Link Radiant Heat is certified to the standards below.

CE 2797
UK 0086

EN14594:2005 3B
EN12941:1998
*A2:2008 TH3/2/1 P R SL
RESPIRATORY PROTECTION
See instruction manual for protection levels.

EN352-3:2002
HEARING PROTECTION
Only in conjunction with 16-533 earmuffs.

EN397:2012+A1:2012
HARD HAT PROTECTION

EN166:2001 CLASS 1 BT 9 3
EYE & FACE PROTECTION



HEAT REFLECTION

The gold coated visor reflects radiant heat away from you, minimizing heat transfer while ensuring your eyes are protected.

gvs-rpb.com

ISO9001
CERTIFIED COMPANY



*From local and globally sourced components.



Protecting you for life's best moments.

Z-LINK® RADIANT HEAT | R | RESPIRATORS

RESPIRATORS | R | Z-LINK® RADIANT HEAT

Z-LINK® PACKAGES



Z-LINK® - PACKAGES | 2 | RESPIRATORS

gvs-rpb.com

Z-Link® Respirator with Tychem® 2000 Face Seal
■ Safety Lens
■ Tychem® 2000 Face Seal
■ PX5® Breathing Tube
Part # 16-010-12-CE



RESPIRATORS | 2 | Z-LINK® - PACKAGES

Z-LINK® PACKAGES

Z-Link® Respirator with Zytec® FR Chin Seal

- Safety Lens
- Zytec® Fire Retardant Chin Seal
- PX5® Breathing Tube

Part # 16-010-31-CE



Z-Link® Respirator with Zytec® FR Face Seal

- Safety Lens
- Zytec® Fire Retardant Face Seal
- PX5® Breathing Tube

Part # 16-010-11-CE



Z-Link® Respirator with Zytec® FR Shoulder Cape

- Safety Lens
- Zytec® Fire Retardant Shoulder Cape
- PX5® Breathing Tube

Part # 16-010-21-CE



Z-Link® Radiant Heat Respirator

- Safety Lens
- Aluminized shoulder cape, top, rear and breathing tube cover
- PX5® Breathing Tube

(Gold Lens ordered separately).

Part # 16-010-31-CE



Z-LINK® PARTS

More parts available on request.

Fit System
(includes 16-520-S, 16-521, 16-522,
16-525, 16-526, 16-530 and 16-531)
Part # 16-520-T



Side Padding System
Part # 16-520-S



Ratchet Assembly
Part # 16-530



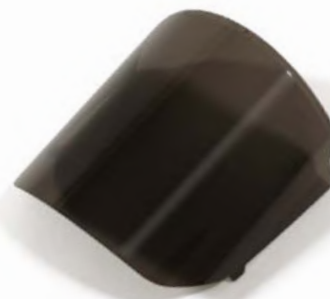
Welding Visor with ADF Lens
Part # 16-670



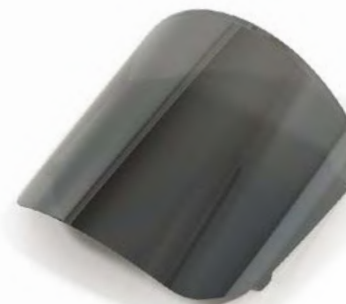
RPB® ADF Lens
Part # 16-871



Safety Lens - Smoke Tinted
Anti Fog/Anti Scratch
Part # 16-810-ST



Safety Lens - Mirror Tinted
Anti Fog
Part # 16-810-MT



Safety Lens
Anti Fog/Anti Scratch
Part # 16-810



Radiant Heat Gold Visor
(includes cover clip and retainer assembly)
Gold - Anti-Scratch Part # 16-675-GT
Gold IR5 - Anti-Scratch Part # 16-675-GTIR5
IR5 Part # 16-675-IR5



Tear-off Lens (pk 50)
Part # 16-811



Z4[®]

**POWERFUL
PROTECTION**

GVS | **rpb**

Protecting you for life's best moments.



Z4®



POWERFUL PROTECTION

With comfort and durability the top priority, RPB has created the most ergonomically balanced welding respirator available. Its lightweight design and multi-adjustment head suspension system ensures a stable fit that moves with you, reducing aches and strains on your neck, allowing you to enjoy life's best moments.

The Z4 boasts an optically clear grinding visor and a flip-up welding visor designed to increase operator productivity. Visibility is further enhanced by clip-in shade 5 side windows offering maximum peripheral vision. These can also be switched out for window blockers which are included in the standard package.

The Z4 includes the large RPB ADF lens with 1/1/1 optical quality rating guaranteeing uniform shading and distortion free vision, allowing you to work safely and more comfortably for longer across different angles.

To further increase your comfort and stability, the Z4 can also be fitted with the Comfort-Link™ padding system for an individualized fit.

The Z4 is certified to the standards below:

CE 2797
UK 0086

EN12941:1998
+A2:2008 TH3/2 P R SL
RESPIRATORY PROTECTION
See instruction manual for protection levels.

EN352-1:2002
HEARING PROTECTION
Only in conjunction with 18-524 earmuffs.

EN166:2001 CLASS 1B
EYE & FACE PROTECTION

EN379:2003+A1:2009
and EN175:1997
WELDING EYE PROTECTION

EN812:2012
HEAD PROTECTION
Only in conjunction with 15-850 Bump Cap.

DUAL AIR DISTRIBUTION SYSTEM

Air is delivered through the dual air distribution system, flowing over the grinding visor to eliminate lens fogging and also to the breathe zone. With the adjuster you can control the direction of the incoming air to suit your preferences.



gvs-rpb.com

ISO9001
CERTIFIED COMPANY

Flip up welding visor during grinding, while maintaining respiratory protection.

Optimum vision with a clear replaceable grinding lens - ANSI Z87+ (EN166) approved.

Lightweight headtop weighing just 805g with ADF and cape.

Aerodynamic shell design deflects fumes away.

Large auto darkening welding lens with a 1/1/1 rating. Variable lens shade (9-13).

Replaceable impact and ADF lenses for ease of maintenance. Optional magnifying lens available.

Comfortable multi-adjustment head suspension system - ergonomically balanced to reduce fatigue.

The dual air distribution system delivers 75% of air supply to your breathe zone via a multi-directional outlet. The remaining 25% is directed over the grinding visor to prevent fogging.

FR rated head cover and cape.



*From local and globally sourced components.



Protecting you for life's best moments.

Z4® PACKAGES

- Z4® Respirator with FR Face Seal**
- 1/1/1 ADF Lens
 - Fire Retardant Face Seal
 - PX5® Breathing Tube
 - Slim-line Earmuffs
- Part # 15-010-11-CE



- Z4® Respirator Welding/Grinding Starter Pack**
- 1/1/1 ADF lens
 - PX5® Powered Air Purifying Respirator (PAPR)
 - PX5® Breathing Tube
 - 2" Flame Retardant Belt Assembly
 - Rechargeable Battery and Charging Bank (EU and UK plug)
 - 1x HEPA (P) filter
 - 1x Spark Arrestor
 - 1x pack of Pre-filters (pk 10)
 - Slim-line Earmuffs
- Part # 15-018-11-EUUK



Z4® ADF LENS

OPEN STATE

RPB OCV COLOR DEFINITION

The OCV Filter range offers superior color definition in both the open and activated state, allowing you to clearly see LED displays on machines and equipment, as well as heat definition on the actual weld.



CLOSED STATE

RPB OCV OPTICAL QUALITY

The OCV filter boasts a 1/1/1 optical quality rating. This means a clear view from a wider range of angles, reducing eye fatigue and increasing your productivity.



40% MORE VIEWING WITH THE RPB® OCV ULTRA ADF (110X110)

- Viewing Area: 10.35 square inches (2.66" x 3.89")
 - Light state: Shade 3. Dark state: Selectable shades 9-13
 - Fast, reliable switching speed: 0.1ms at 73°F / 23°C
 - Optional auto delay function from dark to light (0.15 to 1 seconds)
 - Weight (ADF only): 130g
 - Temperature range: -4°F to 122°F / -20°C to +50°C
 - 3 year warranty
 - 2 Sensors, plus additional Ambient Light Sensor
 - Sensitivity and optional delay adjustment on case
 - Highest quality wide view ADF available
 - Constant UV/IR protection
 - Adapts to standard magnifying lens
 - 1/1/1 DIN Rating
 - Suitable for all types of electro-arc welding, including covered electrodes, MIG/MAG, TIG/WIG, plasma welding and cutting.
- NOT FOR LASER OR GAS WELDING.**



Z4® PARTS

More parts available on request.

RPB ADF Lens
Part # 16-871



Comfort Side Padding System
(includes Velcro™ pieces)
Part # 15-848



Bump Cap
(includes Comfort and Brow Pad
and Front Strap)
Part # 15-850



Quiet-Slim™ Earmuffs
Part # 18-524



FR Breathing Tube Cover
(Breathing Tube not included)
Part # 04-854



Weld Visor Assembly
(includes 16-672 and 15-821)
Part # 15-812



ADF Rear Lens (pk 10)
Part # 16-873



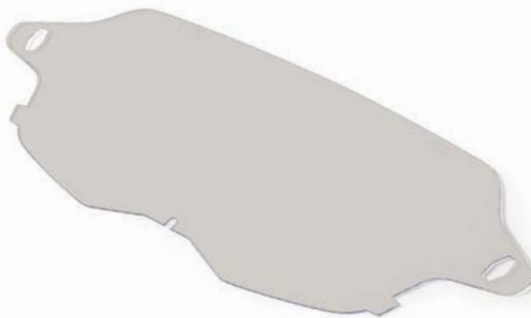
Welding Impact Lens (pk 10)
Part # 16-872



Side Window Blockers -
Solid Gray (pair) Part # 15-821
Shade 5 (pair) Part # 15-821-5



Safety Lens (pk 10)
Part # 15-878



Z4® - PARTS | 9 | RESPIRATORS

RESPIRATORS | 9 | Z4® - PARTS



T-LINK®

MOVE FREELY

GVS | **rpb**

Protecting you for life's best moments.

T-LINK®



MOVE FREELY

The RPB T-Link has been designed to move with you, not against you. With your comfort and job our main focus, the T-Link transforms how you work, advancing your safety and increasing productivity.

Your ability to see has been at the forefront of our design process, with the T-Link boasting a large visor that enables you to easily connect with your surroundings. This is further supported by our Tychem® hood that securely attaches to the headtop, ensuring your downward and peripheral vision is never compromised. The soft breathable inner-bib and extra tuck-in collar ensures maximized comfort and helps to direct air down your body for cooling.

Fitted with a padded headliner and head suspension system, the headtop's weight is evenly distributed to enhance your experience of comfort, relieving you of aches and strains on your neck. Being fully adjustable ensures the respirator fits securely to all head sizes, maximizing stability and always moving with your head. Our innovative design ensures you have a greater range of movement, so you can focus on the task at hand.

The T-Link is certified to the standards below:

CE 2797
UK 0086
EN14594:2005 3B
EN12941:1998 +A2:2008
TH3 P R SL
RESPIRATORY PROTECTION
EN352-3:2002
HEARING PROTECTION
Only in conjunction with 18-5-33 earmuffs.
EN397:2012+A1:2012
HARD HAT PROTECTION
Conforms to impact and optional clauses.
Not all configurations conform to this standard.
Please visit gvs-rpb.com for more details.
EN812:2012
BUMP CAP PROTECTION
Not all configurations conform to this standard.
Please visit gvs-rpb.com for more details.
EN166:2001 CLASS 1F3
EYE & FACE PROTECTION
Not all configurations conform to this standard.
Please visit gvs-rpb.com for more details.

OPTIONAL COMFORT-LINK™ FIT SYSTEM

The Comfort-Link™ is an optional, fully-adjustable fit system that allows total control of helmet and head placement as well as making sure the T-Link moves with your head.



gvs-rpb.com

ISO9001
CERTIFIED COMPANY

Padded headliner supports weight distribution while relieving you of the effects of any pressure points.

Air flow and distribution is fully adjustable with the air deflector system to suit personal preference.

Optional ANSI Z87 approved safety lens (EN166).

Large viewing window for exceptional downward and peripheral vision.

Fixed lens frame ensures the lens will never hit your nose or optical aids being used.

Optically clear peel-off and cassette lenses available.

Option of bump cap or ANSI Z89.1 hard hat protection (EN397).

Two cape materials available:
DuPont™ Tychem® 2000,
DuPont™ Tychem® 4000.

Breathing tube easily attaches to the respirator and swivels to eliminate tangles. Centralized location ensures even weight distribution.

Adjustable ratchet system ensures a customized fit that supports movement, while increasing comfort and productivity.

Soft, breathable inner-bib and long tuck-in collar for extra protection and upper body air flow.



From local and globally sourced components.



Protecting you for life's best moments.

T-LINK® | 9 | RESPIRATORS

RESPIRATORS | 4 | T-LINK®

T-LINK® PACKAGES



T-Link® Respirator for PAPR
■ Bump Cap Assembly
■ Tychem® 2000 Hood
■ PX5® Breathing Tube
Part # 17-110-12-CE



T-LINK® PACKAGES

T-Link® Respirator for SAR

- Bump Cap Assembly
- Tychem® 2000 Hood
- Low Flow Gauge
- SAR Breathing Tube

Part # 17-120-12



T-LINK® - PARTS | 4 | RESPIRATORS

T-LINK® PARTS

More parts available on request.

Cassette Lens (pk 10, 7 layers)
Part # 17-817



Tychem® Breathing Tube Cover
(Breathing Tube not included)
Part # 04-852



Peel-off Lens (pk 25)
Part # 17-815



Clear Breathing Tube Cover
(Breathing Tube not included)
Part # 04-856



Tychem® 2000 Hood
Part # 17-712



Tychem® 4000 Hood
with Sealed Seams
Part # 17-713



T-Link® Bump Cap Assembly
Part # 17-110



T-LINK® - PARTS | 5 | RESPIRATORS

T200™

**PROTECTION THAT
SUPPORTS YOU**



Protecting you for life's best moments.

T200™



PROTECTION THAT SUPPORTS YOU

The RPB T200 enables you to work in your environment free of respiratory hazards and discomfort through its supportive design. With positive pressure breathing and true freedom of movement, the T200 ensures you can navigate your surroundings without any restrictions so you can focus on what's in front of you.

Made for customization, the T200's head harness features multiple adjustment points, allowing you to change the fitting to suit the contours and shape of your head. Through the secure fit and streamlined framework, this maximizes stability, relieving you of aches and strains on your neck.

With the large clear visor, experience an uncompromised field of view that allows for greater precision and attention. The T200 also features an adjustable lens and air ducting positioning to accommodate for different facial features and the use of optical aids such as loupes and prescription lens glasses.

Get more out of your role by using respiratory protection that supports, not restricts you. Experience more with RPB.

The T200 is certified to the standards below:

CE 2797
UK 0086

EN12941:1998 +A2:2008
TH3 P R SL
RESPIRATORY PROTECTION

EN352-1:2002
HEARING PROTECTION
Only in conjunction with 1B-524 earmuffs.

EN166:2001 CLASS 1F3
EYE & FACE PROTECTION
Not all configurations conform to this standard.
Please visit gvs-rpb.com for more details.

CUSTOMIZABLE LAYOUT

Customize the internal layout with four adjustable head harness points and the moveable lens and air duct system to suit your needs.



gvs-rpb.com

ISO9001
CERTIFIED COMPANY

Deconable head suspension system and disposable hood.

Moveable lens and air duct positioning to accommodate for different facial features and optical aids.

Customizable head suspension system includes an adjustable ratchet at the back and over-the-head straps to allow for a secure, individualized fit.

Large viewing window for exceptional downward and peripheral vision allowing for both verbal and non-verbal communication.

Breathing tube easily attaches to respirator and swivels to eliminate tangles. Centralized location ensures even weight distribution.

Soft inner neck seal for extra comfort.

DuPont™ Tychem® 2000 available in face seal, medium length and full length hood options. Full length hood also available in DuPont™ Tychem® 4000.



*From local and globally sourced components.



Protecting you for life's best moments.

T200™ PACKAGES



T200™ Respirator with Tychem® 2000 Face Seal
■ Head Harness Assembly
■ Tychem® 2000 Face Seal
■ PX5® Breathing Tube
Part # 17-200-22-CE



T200™ PACKAGES

T200™ Respirator with Tychem® 2000 Face Seal

- Bump Cap Assembly
- Tychem® 2000 Face Seal
- PX5® Breathing Tube

Part # 17-210-22-CE



T200™ Respirator with Tychem® 2000 Shoulder Length Hood with Face Seal

- Head Harness Assembly
- Tychem® 2000 Shoulder Length Hood with Face Seal
- PX5® Breathing Tube

Part # 17-200-32-CE



T200™ PARTS

More parts available on request.

Head Harness Assembly with Air Duct and Lens Mount Clips

Part # 15-870



Tychem® 2000 Full Hood

Part # 17-712



Bump Cap (includes Comfort and Brow Pad and Front Strap)

Part # 15-850



Tychem® Breathing Tube Cover (Breathing Tube not included)

Part # 04-852



Clear-Vision Cassette Lens (pk 10, 7 layers, for face seal hoods)

Part # 17-811



Clear-Vision Cassette Lens (pk 10, 7 layers, for full length hoods)

Part # 17-817



Peel-off Lens (pk 50, for full length hoods)

Part # 17-815



NOVA 3®

UNRIVALLED COMFORT



NOVA 3®



UNRIVALLED COMFORT

The RPB Nova 3 revolutionizes the abrasive blasting experience with the world's most comfortable blasting respirator. With breakthrough technology and comfort, the Nova 3 has been designed around the operator's needs to advance their safety and productivity.

Visibility has been at the forefront of the Nova 3 design process. With the unique cassette lens system, you can experience an optically clear field of view at all times. The superior operating window optimizes peripheral vision and allows for 30% more downward vision than other respirators on the market.

The ratchet padding system provides a customizable fit and molded side pads absorb sound, protecting against hearing loss. Its unique helmet design distributes weight evenly across your head and shoulders, keeping the center of gravity low, eliminating top heaviness, and relieving you from aches and strains on your neck.

All parts are field replaceable to minimize downtime and the padding system is machine washable for hygiene purposes.

The Nova 3 is certified to the standards below:

CE 2797

UK 0086

EN14594:2005 4B
EN12941:1998
+A2:2008 TH3 P R SL
RESPIRATORY PROTECTION

EN397:2012+A1:2012
HARD HAT PROTECTION
IMPACT CLAUSES

EN166:2001 CLASS 1B
EYE & FACE PROTECTION

BOOST PRODUCTIVITY

Our cassette lens system enables you easily tear-off the outer lens when your view becomes obstructed, significantly reducing your downtime.

gvs-rpb.com



*From local and globally sourced components.

Nova 3® shown with optional L4™ light.

ISO9001
CERTIFIED COMPANY

Streamlined air deflection system distributes air across your breathe zone and across the lens to prevent fogging.

Bellow seal creates a complete barrier to dust and particulates.

Widened perspective provides optimal downward and peripheral field of view.

Tear-off lens system to ensure you always have a clear visor when operating. Cassette lens system available to further increase productivity.

Tough helmet shell, manufactured from robust engineering grade nylon offers ANSI Z89.1 (EN397) certified hard hat protection.

Ratchet system and adjustable molded side pads to help create a secure, customized fit.

Large, glove sized latch that is easy to locate and use.

Removable visor for efficient lens replacement.

Cape is securely attached with eight snap fasteners.



Protecting you for life's best moments.

NOVA 3® PACKAGES



Nova 3® Respirator with Climate Control
■ C40™ Climate Control Device
■ Nylon Cape
■ SAR Breathing Tube
Part # NV3-715-50



NOVA 3® PACKAGES

Nova 3® Respirator with Constant Flow Valve

- Constant Flow Valve
- Nylon Cape
- SAR Breathing Tube

Part # NV3-711-50



NOVA 3® PARTS

More parts available on request.

Blast Jacket size XXL
(includes Inner Bib NV2012)
Part # NV3-755



Visor Kit
(includes Hinge and Latch)
Part # NV3-726



Head Liner Kit
(includes NV3-734-1)
Part # NV3-734



Cassette Lens System
(pk 20, 5 Tear-off and 1 Outer Lens
fused together)
Part # NV3-745



Outer Lens (pk 50)
Part # NV3-724



Inner Lens (pk 10)
Part # NV3-722



Tear-off Lens (pk 50)
Part # NV3-725

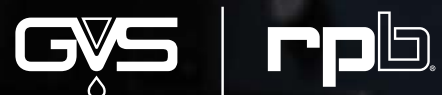


NOVA 3® - PACKAGES | RESPIRATORS

NOVA 3® - PARTS | RESPIRATORS

ASTRO™

**THE ECONOMIC
BLASTING CHOICE**



Protecting you for life's best moments.

ASTRO™



THE ECONOMIC BLASTING CHOICE

The RPB Astro is the undisputed economic champion of the abrasive blasting world. Meeting safety standards worldwide, including Australia, Europe and the USA, this classic flat lens design is part of RPB's design DNA.

Productivity is always at the forefront of our engineers' minds when designing our range. Incorporating our tear-off lens system saves you up to 45 minutes per day and ensures your visibility is never compromised. Weighing just 1.2kgs (excluding breathing tube), the Astro's lightweight design helps to reduce fatigue, and minimizes aches and strains on your neck and shoulders.

The Astro offers low lifetime maintenance and part replacement costs, offering you unbeatable value and return on investment without compromising your safety.

The Astro is certified to the standards below:

CE 2797
UK 0086
EN14594:2005 AB
RESPIRATORY PROTECTION

BOOST PRODUCTIVITY

Operators have reported a time saving of over 45 minutes per day per blaster by using our tear-off lenses. With individually pre-folded tabs, this system guarantees only one lens will be removed at a time.

gvs-rpb.com



*From local and globally sourced components.

ISO9001
CERTIFIED COMPANY



ASTRO™
RESPIRATORS



Protecting you for life's best moments.

ASTRO™ PACKAGES



- Astro™ Respirator
- Constant Flow Valve
 - Nylon Cape
 - Low Flow Indicator
 - SAR Breathing Tube
- Part # 02-800-CE



ASTRO™ PARTS

More parts available on request.

Hand Strap
Part # NV2042



Head Harness
Part # 02-809CE



Inner Bib
Part # NV2012



Cape Cover Band
Part # 02-812



Leather Respirator Cape
Part # NV2002L



Nylon Respirator Cape
Part # NV2002



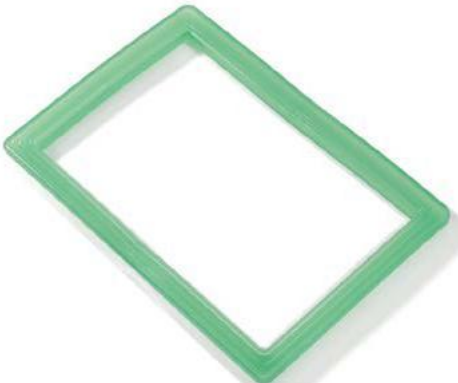
Visor Kit
(includes 02-805 and screws)
Part # 02-804



Tinted Inner Lens (pk 10)
Part # 02-810-T



Window Gasket Seal
Part # 02-807



Inner Lens (pk 10)
Part # 02-810



Low Flow Indicator Assembly
Part # NV2030



Tear-off Lens (pk 50)
Part # 02-816



Outer Lens (pk 50)
Part # 02-811-015



ASTRO™ - PARTS | RESPIRATORS

ASTRO™ - PARTS | RESPIRATORS

GVS | **rpb**
Protecting you for life's best moments.



RADEX® AIRLINE FILTER

Parts available on request.

Radex® Airline Filter
Part # 04-906



25' Breathing Air Supply
Hose 3/8" Diameter
(includes Quick Release Fittings)
Part # NV2028



50' Breathing Air Supply
Hose 3/8" Diameter
(includes Quick Release Fittings)
Part # NV2029



100' Breathing Air Supply
Hose 3/8" Diameter
(includes Quick Release Fittings)
Part # NV2027



C40™ CLIMATE CONTROL DEVICE

Parts available on request.

C40™ Climate Control Device
Part # 03-502



RADEX® AIRLINE FILTER | 2 | AIR MONITORING, FILTRATION & SUPPLY

AIR MONITORING FILTRATION & SUPPLY | 3 | C40™ CLIMATE CONTROL DEVICE



Contact us

**As parts are regularly added and updated, changes occur from time to time.
Contact our team for the latest information.**

Europe

Italy - Head Office

GVS S.P.A.
Via Roma 50,
40069 Zola Predosa (BO), Italy
Tel. +39 051 6176311
gvs@gvs.com

United Kingdom

GVS Filter Technology UK Ltd.
NFC House, Vickers Industrial
Estate
Mellishaw Lane, Morecambe
Lancashire LA3 3EN
Tel. +44 (0) 1524 847600
gvsuk@gvs.com

Romania

GVS Microfiltrazione srl
Sat Ciorani de Sus 1E, 107156
Ciorani Prahova România
Tel. +40 244 463044
gvsromania@gvs.com

Turkey

GVS Türkiye
Cevizli mah. Zuhal cad.
Ritim Istanbul no: 44 A-1 Blok D.371
Maltepe / Istanbul
Tel. +90 216 504 47 67
gvsturkey@gvs.com

Russia

GVS Russia LLC
Profsoyuznaya Street,
25-A, office 102
117418, Moscow
Russian Federation, Russia
Tel. +7 495 0045077
gvsrussia@gvs.com

AMERICA

U.S.A.

RPB Safety LLC.
2807 Samoset Rd, Royal Oak,
MI 48073, USA
Tel. 1-866-494-4599
sales@rpbsafety.com

GVS North America
63 Community Drive
Sanford, ME 04072, USA
Tel. +1 866 7361250
gvsnasafety@gvs.com

GVS Filtration Inc.
2150 Industrial Dr
Findlay, Ohio,
45840-5402, USA
Tel. +1 419-423-9040

GVS Filtration Inc.
2200 W 20th Ave
Bloomer, Wisconsin,
54724-1918, USA
Tel. +1 715-568-5944

Mexico

Universal No. 550, Vynmsa
Aeropuerto Apodaca Industrial Park,
Ciudad Apodaca, Nuevo León, C.P.
66626, México
Tel. +52 81 2282 9003
gvs_mex@gvs.com

Brazil

GVS do Brasil Ltda.
Rodovia Conego Cyriaco
Scaranello Pires 251
Jd. Progresso, CEP 13190-000
Monte Mor (SP), Brasil
Tel. +55 19 38797200
gvs@gvs.com.br

Argentina

Parral 246-9° A
1405 Buenos Aires, Argentina
Tel. +54 11 49889041
gvsarg@gvs.com

ASIA-Pacific

China

GVS Technology (Suzhou) Co., Ltd.
Fengqiao Civil-Run Sci-Tech Park,
602 Changjiang Road, S.N.D.
Suzhou, China 215129
Tel. +86 512 6661 9880
gvschina@gvs.com

Japan

GVS Japan K.K.
KKD Building 4F, 7-10-12
Nishishinjuku
Shinjuku-ku, Tokyo 160-0023
Tel. +81 3 5937 1447
gvsjapan@gvs.com

Korea

GVS Korea Ltd
#315 Bricks Tower
368 Gyungchun-ro (Gaun-dong),
Namyangju-si, Gyeonggi-do,
Tel: +82 31 563 9873
gvs_korea@gvs.com

India

GVS Filter India Pvt Ltd
Unit No 35 & 36 on First Floor
Ratna Jyot Industrial Premises
Irla Lane, Irla Vile Parlae,
Mumbai 400056, India
gvsindia@gvs.com

Malaysia

GVS Filtration Sdn.Bhd
Lot No 10F-2B, 10th Floor,
Tower 5 @ PFCC
Jalan Puteri 1/2, Bandar Puteri
47100 Puchong, Selangor, Malaysia
gvs_malaysia@gvs.com

New Zealand

RPB Safety Ltd.
3 Robin Mann Place,
Christchurch Airport, 8053
Christchurch, New Zealand
Tel. +64 3 357 1761