



MICROBIAL COUNT PLATE CATALOG



Microbiology - the cause of 95% of food safety issues

Microorganisms are of great significance to foods for several reasons. The most significant one is that they can cause spoilage of foods and can also be applied to manufacture a wide variety of food products, as well as cause microbial diseases transmitted by foods. According to world food safety market research and statistics, 95% of the issues in food safety is caused by microbiology.

Detection, identification and enumeration of these foodborne microorganisms are of great importance. From general food hygiene to pathogens enumeration, it is necessary and urgent to make sure that the foods are safe for human consumption.

Foods can be considered as a medium for microbial growth. Considering the vast array of sources, substances, and methods with which food is produced, practically every kind of microbe is a potential contaminant.

Conventional detection of pathogenic bacteria is mainly based on cultivation procedures, which use enrichment broths followed by the isolation of colonies on selective media, biochemical identification and confirmation of pathogenicity. This culture method is selective for the search of one type of pathogen at a time. Currently, both ISO and AOAC official methods are based on these principles.

Here at GVS, we have successfully developed many new microbiology count plate based on selective medium to enumerate the food microorganisms in various samples. In this leaflet, you will find the details and ordering information.

We guarantee you a rapid, sensitive, reliable, reproducible result.



Readily-Usable Microbiology Enumeration Medium Plate



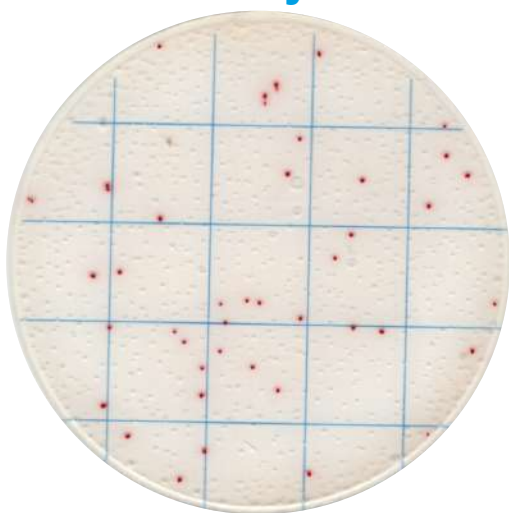
No more culture medium preparation

No extra reagent required

Less time & less labor work

ISO & AOAC standards compatible

1-24-C Easy Determination



1ml Sample Suspension

1ml of solid sample suspension or 1ml liquid sample in PBS, adjust the pH to neutral.

24h Incubation

Incubate at 36 °C for 22 - 24h.

Check the result

Enumerate the colonies according to the kit instruction manual. Further identification can be performed if necessary.

Product #	Description	Result	Incubation
MCPG00125	Aerobic Count Plate	Red colony	36±1°C, 48±2h
MCPG00225	Staph Count Plate	Dark purple red colony	36±1°C, 24±2h
MCPG00325	Pivot E. coli / Coliform Count Plate	Blue purple colony	36±1°C, 24±2h
MCPG00425	Pivot Coliform Count Plate	Green colony	36±1°C, 24±2h
MCPG00525	Listeria Count Plate	Blue green colony	36±1°C, 24±2h
MCPG00825	Yeast & Mould Count Plate	Green colony	28±1°C, 48-2h
MCPG01025	Coliform Count Plate	Red colony	36±1°C, 18-24h
MCPG01125	E.coli / Coliform Count Plate	Blue purple & red colony	36±1°C, 18-24h

Readily-Usable Microbiology Enumeration Medium Plate



No more culture medium preparation

No extra reagent required

Less time & less labor work

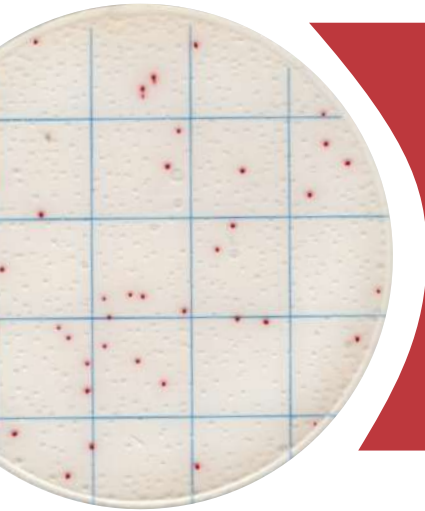
ISO & AOAC standards compatible

Product #	Description	Result	Incubation
MCPG01325	Bacillus Cereus Count Plate	Purple red colony	36±1°C, 48±2h
MCPG01425	Lactic Acid Bacteria Count Plate	Red colony	36±1°C, 48±2h
MCPG01525	Salmonella Count Plate	Purple red colony	36±1°C, 24±2h
MCPG01625	Enterobacteriaceae Count Plate	Red colony	36±1°C, 18-24h
MCPG01725	Geobacillus s. Count Plate	Red colony	55±1°C, 36±1h
MCPG01825	Enterococcus f. Count Plate	Black, black green colony	36±1°C, 26±2h
MCPG01925	Bacillus Psychrophilus Count Plate	Red colony	21±1°C, 48-60h
MCPG02425	Aerobic Bacillus Count Plate	Red colony	36 ±1°C, 24±2h
MCPG02525	Shigella Count Plate	Red colony	36 ±1°C, 24-48h
MCPG02625	Listeria m. Count Plate	Blue green colony	36±1°C, 36h
MCPG02725	E.Coli O157 Count Plate	Gray colony with halo	36±1°C, 18-24h
MCPG02825	Vibrio parahaemolyticus Count Plate	Red colony	36±1°C, 8-18h
MCPG02925	Psychrophilic Bacteria Count Plate	Red colony	21±1°C, 28-30h

Aerobic Count Plate

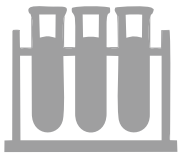
Product Code: MCPG00125

25 plates / pack

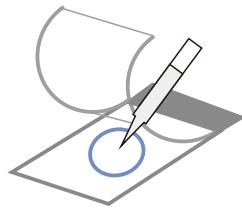


Aerobic Count Plate (ACP) is a sample-ready-culture medium system which contains readymade dry medium, a cold-water-soluble gelling agent and indicator. It can be used in direct counting of aerobic colonies after 48h – 72h incubation. The result is consistent with the corresponding ISO standards and other commercial counting plates.

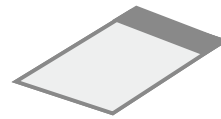
Read the user manual carefully before test, and follow the instructions.
Failure to do so may lead to inaccurate results.



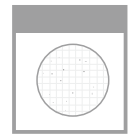
Sample Preparation



Sampling



Incubation



Enumeration

Aerobic Count Plate is applicable for the counting of as many as 65 aerobic bacteria. All will produce red colonies for counting, regardless of the size and clarity.

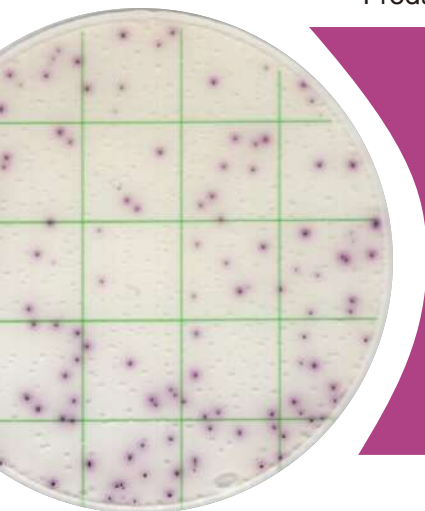
The following bacteria has been tested successfully with this count plate

ATCC 8099,CICC 10305,ATCC 25922,CICC 10003,CICC 10389,CICC 10907,CICC 21530,CICC 10667,CICC 24190,CICC 24186,CICC 24188,CICC 24187,ATCC 25955,ATCC 10031,ATCC 13883,ATCC 13048,ATCC 29544,ATCC 25931,ATCC 12022,CICC 10865,CICC 23829,CICC 21534,CICC 21535,ATCC 9207,ATCC 15947,ATCC 51114,ATCC 43864,ATCC 25405,GDMCC 1.163,ATCC 13311,CICC 21501,CICC 21495,CICC 21512,CICC 21501,ATCC 27511,ATCC 33291,ATCC 43478,CICC 10869,ATCC 19433,ATCC 19258,CICC 20247,ATCC 8014,CICC 6009,ATCC 6538,ATCC 25923,CICC 10384,ATCC 27217,ATCC 12228,CMCC 26069,CICC 21602,ATCC 8032,ATCC 33090,ATCC 19111,ATCC 35967,ATCC 19119,ATCC 35897,ATCC 25401,CICC 20483,CICC 21261,ATCC 11778,ATCC 6633,CICC 10071,etc.

Staphylococcus aureus Count Plate

Product Code: MCPG00225

25 plates / pack

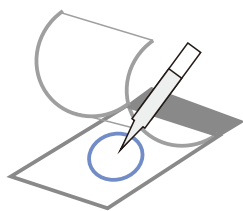


Staphylococcus aureus Count Plate is a sample-ready-culture medium system which contains readymade Baird-Parker medium, a cold-water-soluble gelling agent indicator and selective inhibitor. It can be used in direct counting of staphylococcus aureus colonies after 24h incubation. The result is consistent with ISO standards and commercial counting plates.

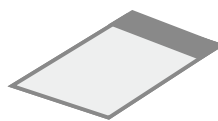
Read the user manual carefully before test, and follow the instructions. Failure to do so may lead to inaccurate results.



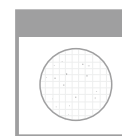
Sample Preparation



Sampling



Incubation



Enumeration

Incubate the plates at 36 ± 1 °C for 24 ± 2 hours.

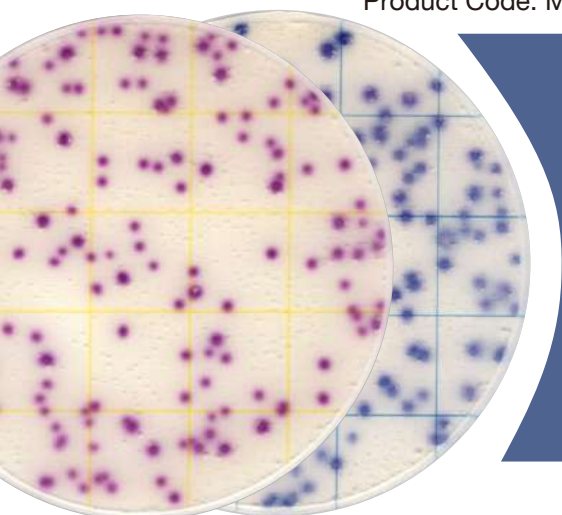
For aquatic products, please incubate at 30 ± 1 °C for 72 ± 3 hours for. Up to 6 plates can be stacked in one incubation holder.

On this Staphylococcus aureus count plate, Staphylococcus aureus is red colonies, other staphylococcus is light pink green or colorless colonies. Majority of gram-negative and other gram-positive bacterium cannot grow in this plate, or they can present as blue colonies.

Pivot *E. coli*/Coliform Count Plate

Product Code: MCPG00325

25 plates / pack

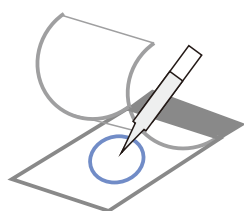


Pivot *E. coli*/Coliform Count Plate (ECCP) is a sample-ready-culture medium system which contains readymade dry medium, a cold-water-soluble gelling agent and indicator. It can be used in direct counting of *E. coli* and Coliform colonies after 24h incubation.

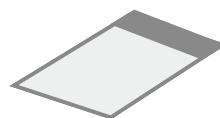
Read the user manual carefully before test, and follow the instructions. Failure to do so may lead to inaccurate results.



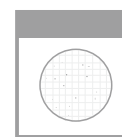
Sample Preparation



Sampling



Incubation



Enumeration

Incubate the plates at 36 ± 1 °C for 24 ± 2 hours. Up to 6 plates can be stacked in one incubation holder.

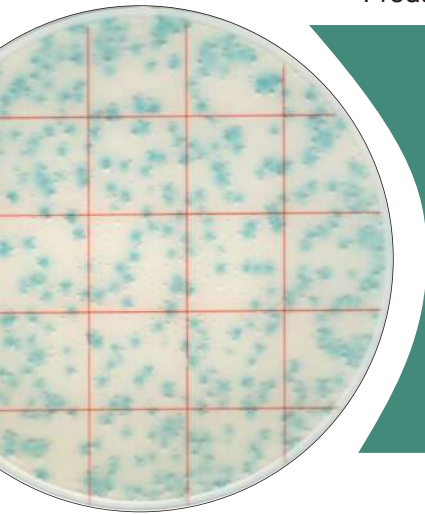
Counting of Coliform: Count colonies within 15-150 CFU. All red or blue colonies shall be counted regardless of the size or intensity.

Counting of *E. coli*: Count colonies within 10-100 CFU. All blue colonies shall be counted regardless of the size or intensity.

Pivot Coliform Count Plate

Product Code: MCPG00425

25 plates / pack

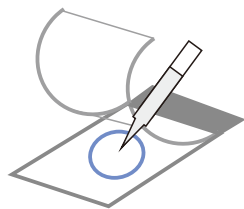


Pivot Coliform Count Plate (CCP) is a sample-ready-culture medium system which contains readymade dry medium, a cold-water-soluble gelling agent and indicator. It can be used in direct counting of coliform colonies after 24h incubation. The result is consistent with the corresponding ISO standards and other commercial counting plates.

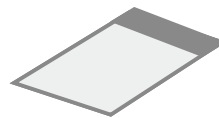
Read the user manual carefully before test, and follow the instructions.
Failure to do so may lead to inaccurate results.



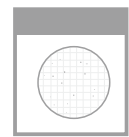
Sample Preparation



Sampling



Incubation



Enumeration

This Pivot Coliform Count Plate (CCP) can be used in the quantitative plating of Coliform Colonies in the food and beverage industries. Other applications are available upon request. Contact your supplier for more details.

Quantitative counting of the plate can be done by a standard colony counter or by software. All green colonies shall be counted regardless of the size or intensity.

Count colonies within 15-150 CFU, count all the green colonies.

Listeria Count Plate

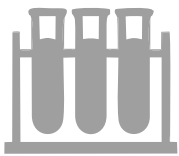
Product Code: MCPG00525

25 plates / pack

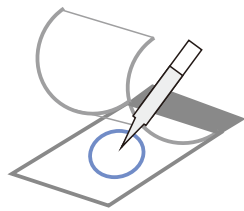


Aerobic Count Plate (ACP) is a sample-ready-culture medium system which contains readymade dry medium, a cold-water-soluble gelling agent and indicator. It can be used in direct counting of aerobic colonies after 48h – 72h incubation. The result is consistent with the corresponding ISO standards and other commercial counting plates.

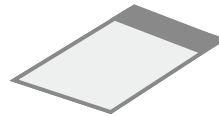
Read the user manual carefully before test, and follow the instructions. Failure to do so may lead to inaccurate results.



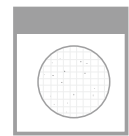
Sample Preparation



Sampling



Incubation



Enumeration

This Listeria Count Plate can be used in the quantitative plating of Listeria Colonies in the food, food material, water and production environment.

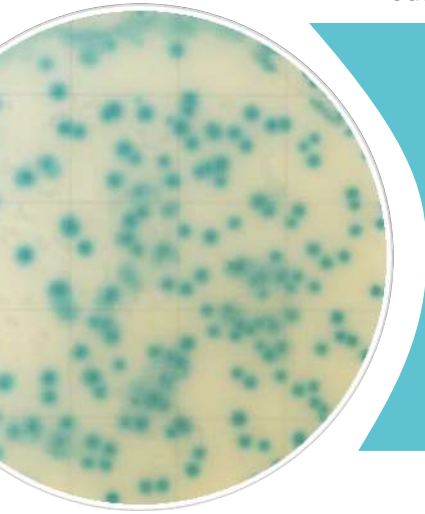
Quantitative counting of the plate can be done by a standard colony counter or by software. All green colonies shall be counted regardless of the size or intensity.

Count colonies within 30-200 CFU, count all the green colonies.

Yeast & Mould Count Plate

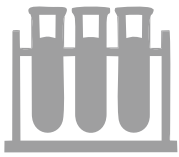
Product Code: MCPG00825

25 plates / pack

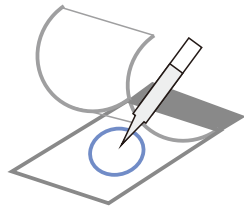


Yeast Mould Count Plate (YM) is a sample-ready-culture medium system which contains ready-made dry medium, somatomedin, a cold-water-soluble gelling agent and indicator. It can be used in direct counting of yeast and mould colonies after 2-3 days' incubation. The result is consistent with the corresponding ISO standards and other commercial counting plates.

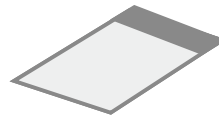
Read the user manual carefully before test, and follow the instructions. Failure to do so may lead to inaccurate results.



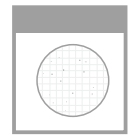
Sample Preparation



Sampling



Incubation



Enumeration

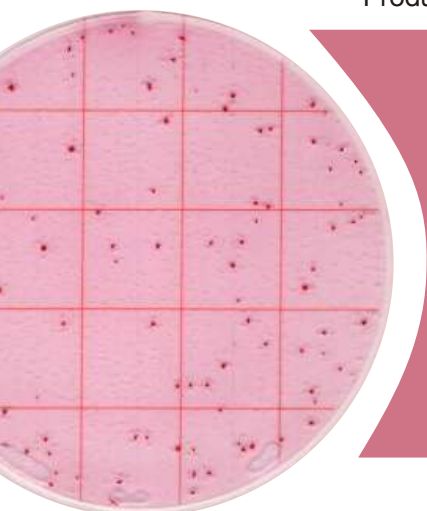
This Yeast Mould Count Plate can be used in the quantitative plating of yeast and mould colonies in the heat-processed product.

Quantitative counting of the plate can be done by a standard colony counter or by software. All green colonies shall be counted regardless of the size or intensity. Count colonies within 10-150 CFU, count all the green colonies.

Coliform Count Plate

Product Code: MCPG01025

25 plates / pack

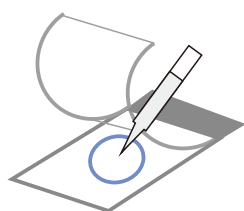


Coliform Count Plate is a sample-ready-culture medium system which contains readymade dry medium, a cold-water-soluble gelling agent and indicator. It can be used in direct counting of coliform colonies after 18h – 24h incubation. The result is consistent with the corresponding ISO standards and other commercial counting plates.

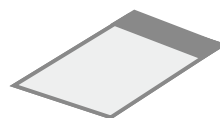
Read the user manual carefully before test, and follow the instructions. Failure to do so may lead to inaccurate results.



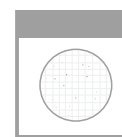
Sample Preparation



Sampling



Incubation



Enumeration

This Coliform Count Plate can be used in the quantitative plating of Coliform Colonies in the food and beverage industries.

Incubate the plates at 36 ± 1 °C for 18-24 hours. Up to 6 plates can be stacked in one incubation holder.

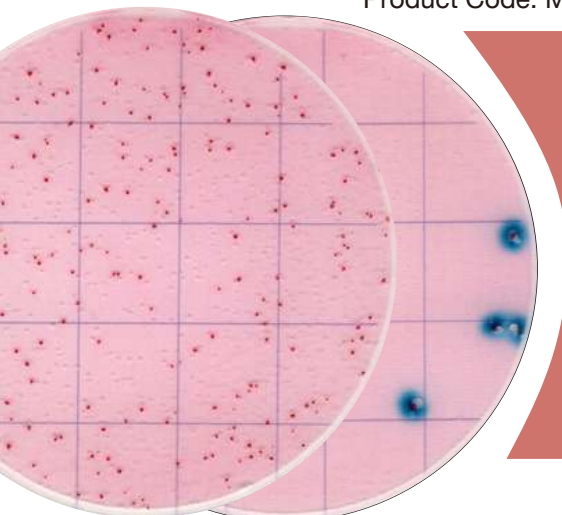
Quantitative counting of the plate can be done by a standard colony counter or by software. All red colonies shall be counted regardless of the size or intensity.

Count colonies within 15-150 CFU, count all the red colonies.

E. coli/Coliform Count Plate

Product Code: MCPG01125

25 plates / pack

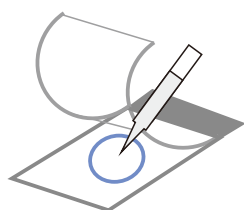


E. coli/Coliform Count Plate is a sample-ready-culture medium system which contains readymade dry medium, a cold-water-soluble gelling agent and indicator. It can be used in direct counting of E. coli/Coliform colonies after 18-24h incubation. The result is consistent with the ISO standards and other commercial plates.

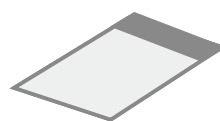
Read the user manual carefully before test, and follow the instructions. Failure to do so may lead to inaccurate results.



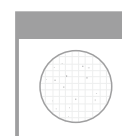
Sample Preparation



Sampling



Incubation



Enumeration

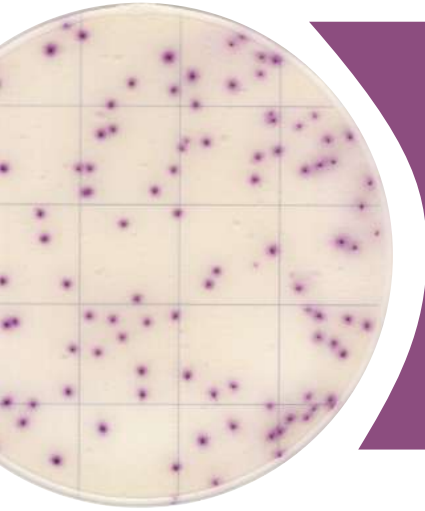
This E. coli/Coliform Count Plate can be used in the quantitative plating of E. coli/Coliform Colonies in the food and beverage industries.

Coliform can grow in this plate, Escherichia Coli are **blue colonies** associated with gas bubble, Klebsiella pneumonia and enterobacter cloacae are **red colonies** associated with gas bubble, Citrobacter are **red colonies** without gas bubble. Other gram-negative bacterium (Salmonella, Shigella) can grow in this plate, their colonies are red without gas bubble. Enterobacter Sakazakii can grow in this plate, its colonies are red associated with gas bubble.

Bacillus cereus Count Plate

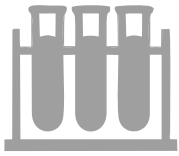
Product Code: MCPG01325

25 plates / pack

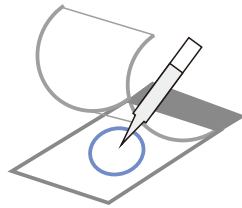


Bacillus cereus Count Plate (BCCP) is a sample-ready-culture medium system which contains readymade dry medium, a cold-water-soluble gelling agent and indicator. It can be used in direct counting of Bacillus cereus colonies after 24h incubation. The result is consistent with the corresponding ISO standards and other commercial counting plates.

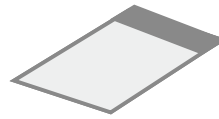
Read the user manual carefully before test, and follow the instructions. Failure to do so may lead to inaccurate results.



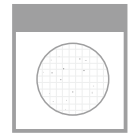
Sample Preparation



Sampling



Incubation



Enumeration

This Bacillus cereus Count Plate (BCCP) can be used in the quantitative plating of Bacillus cereus Colonies in the food and beverage industries. Other applications are available upon request. Contact your supplier for more details.

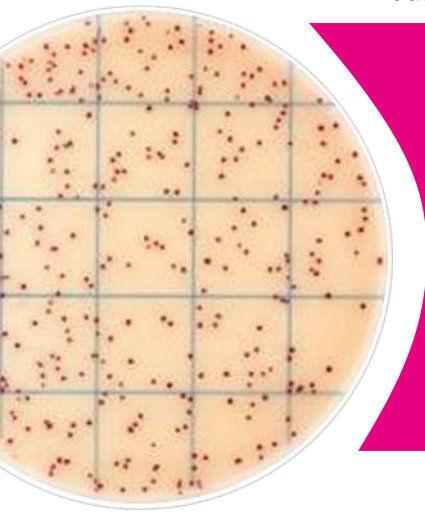
Quantitative counting of the plate can be done by a standard colony counter or by software. All purple red colonies shall be counted regardless of the size or intensity.

Count colonies within 20-200 CFU, count all the purple red colonies.

Lactic Acid Bacteria Count Plate

Product Code: MCPG01425

25 plates / pack

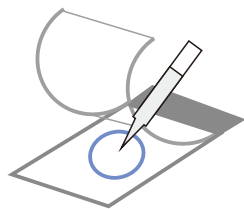


Lactic Acid Bacteria Count Plate (LABP) is a sample-ready-culture medium system which contains readymade dry medium, a cold-water-soluble gelling agent and indicator. It can be used in direct counting of Salmonella colonies after 24h incubation. The result is consistent with the corresponding ISO standards and other commercial counting plates.

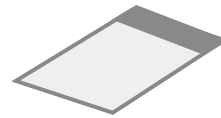
Read the user manual carefully before test, and follow the instructions. Failure to do so may lead to inaccurate results.



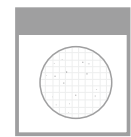
Sample Preparation



Sampling



Incubation



Enumeration

This Lactic Acid Bacteria Count Plate (LABP) can be used in the quantitative plating of Lactic Acid Bacteria Colonies in the food and beverage industries. Other applications are available upon request. Contact your supplier for more details.

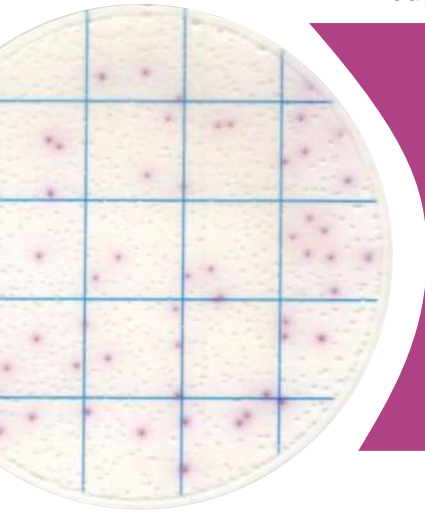
Quantitative counting of the plate can be done by a standard colony counter or by software. All red colonies shall be counted regardless of the size or intensity.

Count colonies within 30-300 CFU, count all the red colonies.

Salmonella Count Plate

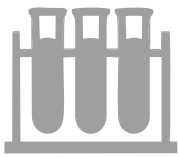
Product Code: MCPG01525

25 plates / pack

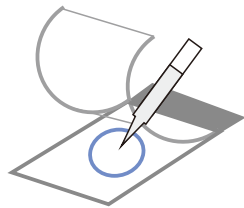


Salmonella Count Plate (SCP) is a sample-ready-culture medium system which contains readymade dry medium, a cold-water-soluble gelling agent and indicator. It can be used in direct counting of Salmonella colonies after 24h incubation. The result is consistent with the corresponding ISO standards and other commercial counting plates.

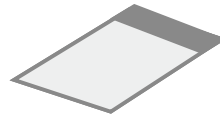
Read the user manual carefully before test, and follow the instructions. Failure to do so may lead to inaccurate results.



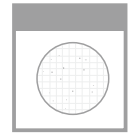
Sample Preparation



Sampling



Incubation



Enumeration

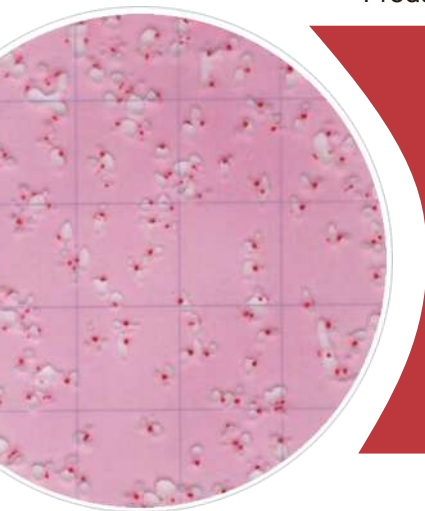
This Salmonella Count Plate (SCP) can be used in the quantitative plating of Salmonella Colonies in the food and beverage industries. Other applications are available upon request. Contact your supplier for more details.

Quantitative counting of the plate can be done by a standard colony counter or by software. All purple red colonies shall be counted regardless of the size or intensity. Count colonies within 30-200 CFU, count all the purple red colonies.

Enterobacteriaceae Count Plate

Product Code: MCPG01625

25 plates / pack

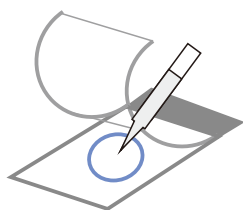


Enterobacteriaceae Count Plate (EBCP) is a sample-ready-culture medium system which contains readymade dry medium, a cold-water-soluble gelling agent and indicator. It can be used in direct counting of Enterobacteriaceae colonies after 24h incubation. The result is consistent with the corresponding ISO standards and other commercial plates.

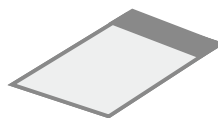
Read the user manual carefully before test, and follow the instructions. Failure to do so may lead to inaccurate results.



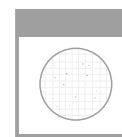
Sample Preparation



Sampling



Incubation



Enumeration

This Enterobacteriaceae Count Plate (EBCP) can be used in the quantitative plating of Enterobacteriaceae Colonies in the food and beverage industries. Other applications are available upon request. Contact your supplier for more details.

Quantitative counting of the plate can be done by a standard colony counter or by software. All red colonies shall be counted regardless of the size or intensity.

Count colonies within 15-150 CFU, count all the red colonies.

Geobacillus stearothermophilus Count Plate

Product Code: MCPG01725

25 plates / pack

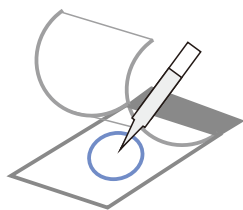


Geobacillus stearothermophilus Count Plate (GSCP) is a sample-ready-culture medium system which contains readymade dry medium, a cold-water-soluble gelling agent and indicator. It can be used in direct counting of Geobacillus stearothermophilus colonies after 36h incubation. The result is consistent with the corresponding ISO standards.

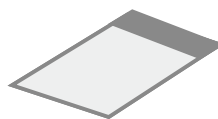
Read the user manual carefully before test, and follow the instructions. Failure to do so may lead to inaccurate results.



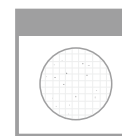
Sample Preparation



Sampling



Incubation



Enumeration

This Geobacillus stearothermophilus Count Plate (GSCP) can be used in the quantitative plating of Geobacillus stearothermophilus Colonies in the food and beverage industries. Other applications are available upon request. Contact your supplier for more details.

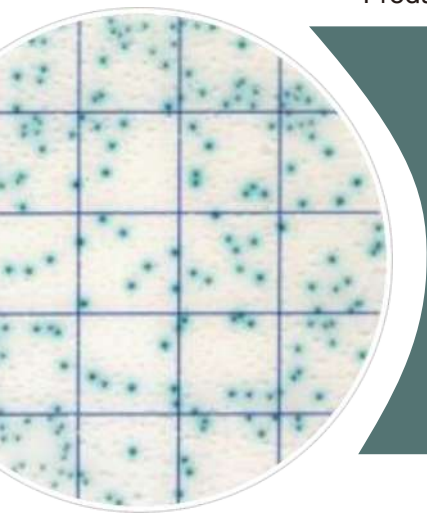
Quantitative counting of the plate can be done by a standard colony counter or by software. All red colonies shall be counted regardless of the size or intensity.

Count colonies within 10-150 CFU, count all the red colonies.

Enterococcus faecalis Count Plate

Product Code: MCPG01825

25 plates / pack

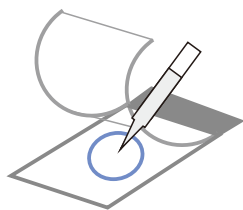


Enterococcus faecalis Count Plate (EFCP) is a sample-ready-culture medium system which contains readymade dry medium, a cold-water-soluble gelling agent and indicator. It can be used in direct counting of Enterococcus faecalis colonies after 24h incubation. The result is consistent with the corresponding ISO standards and other commercial plates.

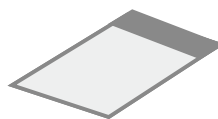
Read the user manual carefully before test, and follow the instructions. Failure to do so may lead to inaccurate results.



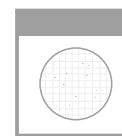
Sample Preparation



Sampling



Incubation



Enumeration

This Enterococcus faecalis Count Plate (SCP) can be used in the quantitative plating of Enterococcus faecalis Colonies in the food and beverage industries. Other applications are available upon request. Contact your supplier for more details.

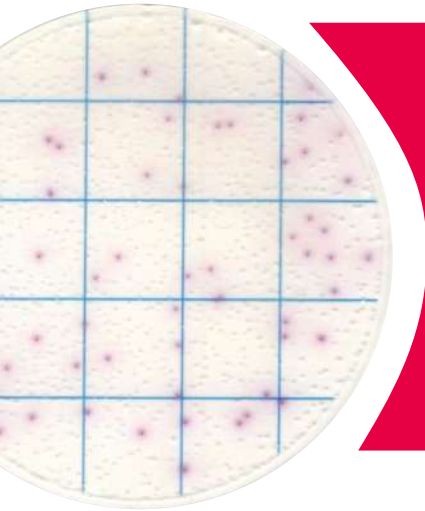
Quantitative counting of the plate can be done by a standard colony counter or by software. All purple red colonies shall be counted regardless of the size or intensity.

Count colonies within 20-100 CFU, count all the dark colonies with blue halo.

Bacillus Psychrophilus Count Plate

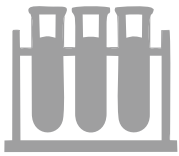
Product Code: MCPG01925

25 plates / pack

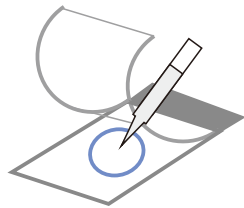


Bacillus Psychrophilus Count Plate (BPCP) is a sample-ready-culture medium system which contains readymade dry medium, a cold-water-soluble gelling agent and indicator. It can be used in direct counting of bacillus psychrophilus colonies after 48-60h incubation. The result is consistent with the corresponding ISO standards and other commercial plates.

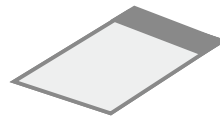
Read the user manual carefully before test, and follow the instructions. Failure to do so may lead to inaccurate results.



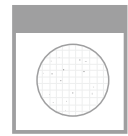
Sample Preparation



Sampling



Incubation



Enumeration

This Bacillus Psychrophilus Count Plate (BPCP) can be used in the quantitative plating of Bacillus Psychrophilus Colonies in the food and beverage industries. Other applications are available upon request. Contact your supplier for more details.

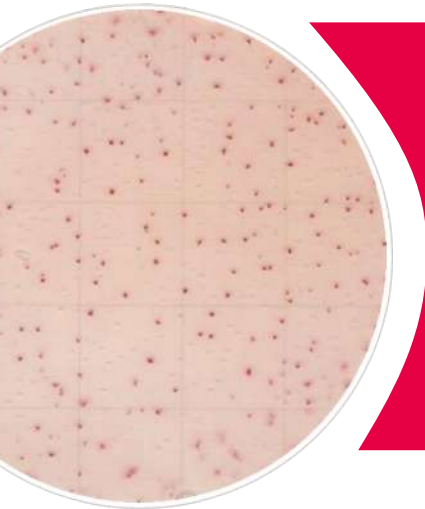
Quantitative counting of the plate can be done by a standard colony counter or by software. All red colonies shall be counted regardless of the size or intensity.

Count colonies within 10-150 CFU, count all the red colonies.

Aerobic Bacillus Count Plate

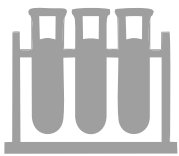
Product Code: MCPG02425

25 plates / pack

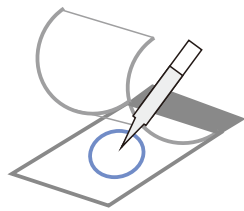


Aerobic Bacillus Count Plate (ABCP) is a sample-ready-culture medium system which contains readymade dry medium, a cold-water-soluble gelling agent and indicator. It can be used in direct counting of aerobic bacillus colonies after 24h incubation. The result is consistent with the corresponding ISO standards and other commercial counting plates.

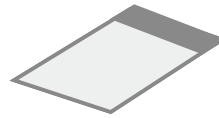
Read the user manual carefully before test, and follow the instructions. Failure to do so may lead to inaccurate results.



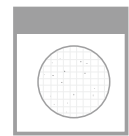
Sample Preparation



Sampling



Incubation



Enumeration

This Aerobic Bacillus Count Plate (ABCP) can be used in the quantitative plating of Aerobic Bacillus Colonies in the food and beverage industries. Other applications are available upon request. Contact your supplier for more details.

Quantitative counting of the plate can be done by a standard colony counter or by software. All red colonies shall be counted regardless of the size or intensity.

Count colonies within 10-150 CFU, count all the purple red colonies.

Shigella Count Plate

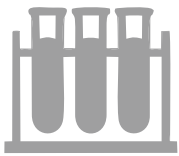
Product Code: MCPG02525

25 plates / pack

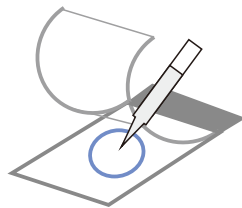


Shigella Count Plate (SHCP) is a sample-ready-culture medium system which contains readymade dry medium, a cold-water-soluble gelling agent and indicator. It can be used in direct counting of Shigella colonies after 24-48h incubation. The result is consistent with the corresponding ISO standards and other commercial counting plates.

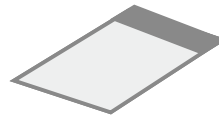
Read the user manual carefully before test, and follow the instructions. Failure to do so may lead to inaccurate results.



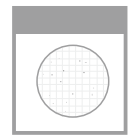
Sample Preparation



Sampling



Incubation



Enumeration

This Shigella Count Plate (SHCP) can be used in the quantitative plating of Salmonella Colonies in the food and beverage industries. Other applications are available upon request. Contact your supplier for more details.

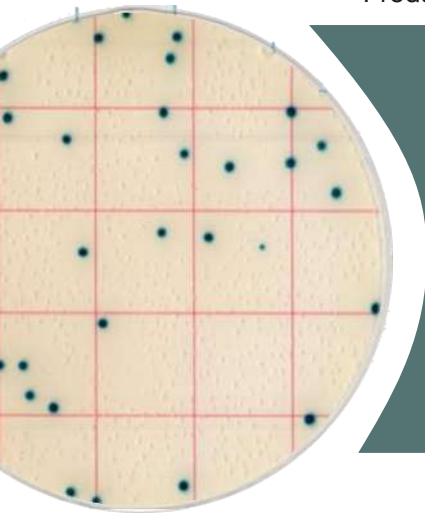
Quantitative counting of the plate can be done by a standard colony counter or by software. All red colonies shall be counted regardless of the size or intensity.

Count all the red colonies.

Listeria M. Count Plate

Product Code: MCPG02625

25 plates / pack

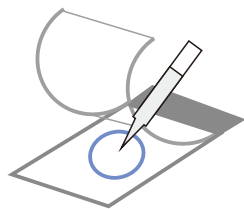


Listeria M. Count Plate (LMCP) is a sample-ready-culture medium system which contains readymade dry medium, a cold-water-soluble gelling agent and indicator. It can be used in direct counting of listeria monocytogenes colonies after 36h incubation. The result is consistent with the corresponding ISO standards and other commercial plates.

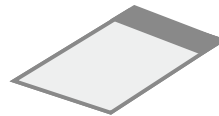
Read the user manual carefully before test, and follow the instructions.
Failure to do so may lead to inaccurate results.



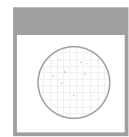
Sample Preparation



Sampling



Incubation



Enumeration

This Listeria M. Count Plate (LMCP) can be used in the quantitative plating of Listeria Monocytogenes Colonies in the food and beverage industries. Other applications are available upon request. Contact your supplier for more details.

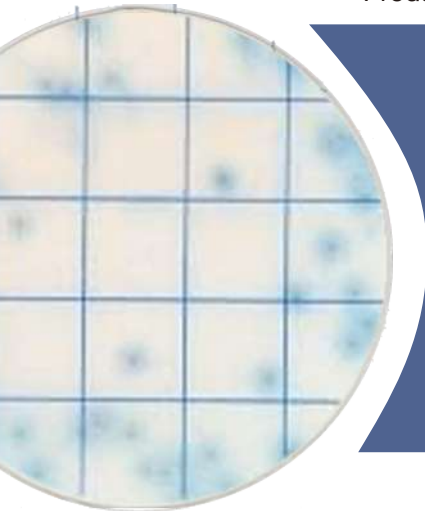
Quantitative counting of the plate can be done by a standard colony counter or by software. All blue green colonies shall be counted regardless of the size or intensity.

Enrichment is needed before testing with this count plate.

E.Coli O157 Count Plate

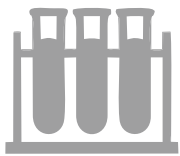
Product Code: MCPG02725

25 plates / pack

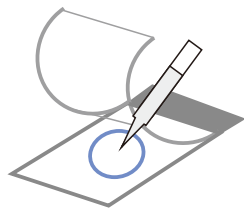


E. Coli O157 Count Plate (ECOCP) is a sample-ready-culture medium system which contains readymade dry medium, a cold-water-soluble gelling agent and indicator. It can be used in direct counting of E. Coli O157 colonies after 24h incubation. The result is consistent with the corresponding ISO standards and other commercial counting plates.

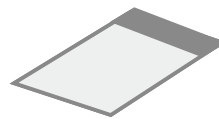
Read the user manual carefully before test, and follow the instructions. Failure to do so may lead to inaccurate results.



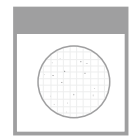
Sample Preparation



Sampling



Incubation



Enumeration

This E. Coli O157 Count Plate (ECOCP) can be used in the quantitative plating of E. Coli O157 Colonies in the food and beverage industries. Other applications are available upon request. Contact your supplier for more details.

Quantitative counting of the plate can be done by a standard colony counter or by software. E.Coli O157 colonies are gray with dark-blue halo, higher concentration of colonies may lead to dark background. Please further dilute the sample for enumeration. Count the gray colonies with dark-blue halo.

Vibrio parahaemolyticus Count Plate

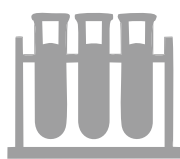
Product Code: MCPG02825

25 plates / pack

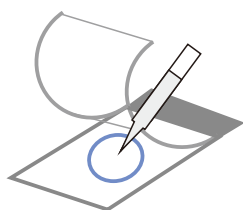


Vibrio Parahaemolyticus Count Plate (VPCP) is a sample-ready-culture medium system which contains readymade dry medium, a cold-water-soluble gelling agent and indicator. It can be used in direct counting of Vibrio Parahaemolyticus colonies after 8-18h incubation. The result is consistent with the corresponding ISO standards and other commercial plates.

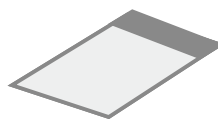
Read the user manual carefully before test, and follow the instructions. Failure to do so may lead to inaccurate results.



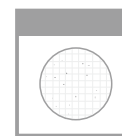
Sample Preparation



Sampling



Incubation



Enumeration

This Vibrio Parahaemolyticus Count Plate (VPCP) can be used in the quantitative plating of Vibrio Parahaemolyticus Colonies in the food and beverage industries. Other applications are available upon request. Contact your supplier for more details.

Quantitative counting of the plate can be done by a standard colony counter or by software. All red colonies shall be counted regardless of the size or intensity.

Count all the red colonies.

Psychrophilic Bacteria Count Plate

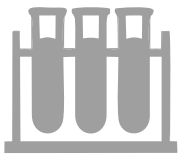
Product Code: MCPG02925

25 plates / pack

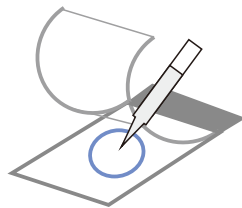


Psychrophilic Bacteria Count Plate (PBCP) is a sample-ready-culture medium system which contains readymade dry medium, a cold-water-soluble gelling agent and indicator. It can be used in direct counting of Psychrophilic Bacteria colonies after 28-30h incubation. The result is consistent with the corresponding ISO standards and other commercial plates.

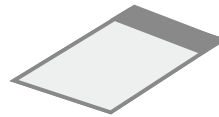
Read the user manual carefully before test, and follow the instructions. Failure to do so may lead to inaccurate results.



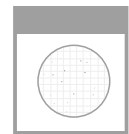
Sample Preparation



Sampling



Incubation

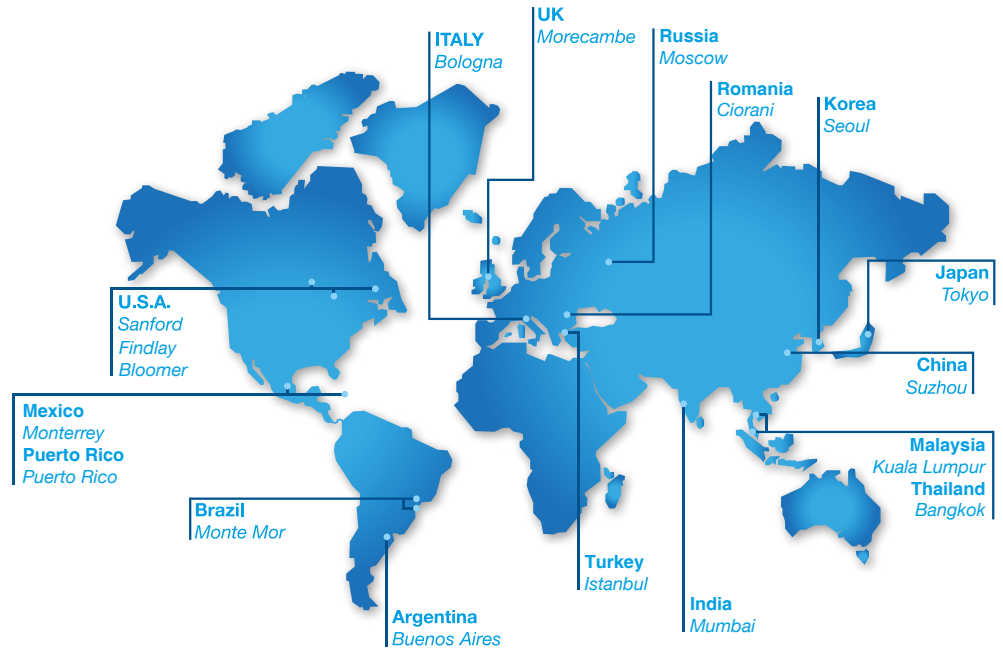


Enumeration

This Psychrophilic Bacteria Count Plate (PBCP) can be used in the quantitative plating of Psychrophilic Bacteria Colonies in the food and beverage industries. Other applications are available upon request. Contact your supplier for more details.

Quantitative counting of the plate can be done by a standard colony counter or by software. All red colonies shall be counted regardless of the size or intensity.

Count colonies within 10-300 CFU, count all the red colonies.



WORLDWIDE

EUROPE

Italy Office
Headquarters
GVS S.p.A.
Via Roma 50
40069 Zola Predosa (BO) - Italy
Tel. +39 051 6176311
gvs@gvs.com

Russia
GVS Russia LLC.
Profsoyuznaya Street, 25-A, office 102
117418, Moscow
Russian Federation (Russia)
Tel. +7 495 0045077
gvsrussia@gvs.com

United Kingdom
GVS Filter Technology UK
Vickers Industrial Estate
Mellishaw Lane, Morecambe
Lancashire LA3 3EN
Tel. +44 (0) 1524 847600
gvsuk@gvs.com

Romania
GVS Microfiltrazione srl
Sat Ciorani de Sus 1E - Comuna Ciorani
Prahova România
Tel. (+40) 244 463044
gvsro@gvs.com

Turkey
GVS Türkiye
Nidakule Merdivenköy Mahallesi
Bora Sokak No:1 Kat:7 - 34732 Istanbul
Tel. +90 216 504 47 67
gvsurkey@gvs.com

ASIA

China
GVS Technology (Suzhou) Co., Ltd.
Fengqiao Civil-Run Sci-Tech Park,
602 Changjiang Road,S.N.D.
Suzhou, China 215129
Tel. +86 512 6661 9880
gvschina@gvs.com

GVS YIBO Medical Devices Co. Ltd.
17, Zhongshan East - Yuyao city,
315403 Zhejiang Province, China
Tel. +86 574 6257 5697

Japan
GVS Japan K.K.
KKD Building 4F, 7-10-12 Nishishinjuku
Shinjuku-ku, Tokyo 160-0023 Japan
Tel. +81 3 5937 1447
gvsjapan@gvs.com

Korea
GVS Korea Ltd
#315 Bricks Tower
368 Gyungchun-ro(Gaun-dong),
Namyangju-si, Gyunggi-do,
Tel: +82 31 563 9873
gvsukorea@gvs.com

India
GVS Filter India Pvt Ltd
Unit No 35 & 36 on First Floor
Ratna Jyot Industrial Premises Irla Lane,
Irla Vile Parle, Mumbai 400056, India
gvsindia@gvs.com

Malaysia
GVS Filtration Sdn.Bhd
Lot No 10F-2B, 10th Floor, Tower 5 @ PFCC
Jalan Puteri 1/2, Bandar Puteri
47100 Puchong, Selangor, Malaysia
Tel: +60 3 7800 0062
gvsmalaysia@gvs.com

Thailand
GVS Thailand
88 Ratchadaphisek Rd,
Office 10E03 - Khlong Toei,
Bangkok 10110
gvs thailand@gvs.com

AMERICA

U.S.A.
GVS North America
63 Community Drive
Sanford, ME 04073 - USA
Tel. +1 866 7361250
gvsusa@gvs.com

GVS Filtration Inc.
2150 Industrial Drive
Findlay, OH. 45840 - USA
Tel. +1.419.423.9040
gvsfiltration@gvs.com

2200 W 20th Avenue
Bloomer, WI 54724 - USA
Tel. +1.715.568.5944
gvsfiltration@gvs.com

Puerto Rico
GVS Puerto Rico, LLC
98 Carr 194 - Fajardo,
Puerto Rico, 00738-2988, USA
Tel. +1.787.355.4100
gvsuertorico@gvs.com

México
GVS Filter Technology de Mexico
Universal No. 550, Vynmsa Aeropuerto Apodaca
Industrial Park, Ciudad Apodaca, Nuevo León, C.P.
66626 - México
Tel. +52 81 2282 9003
gvs mex@gvs.com

Argentina
GVS Argentina S.A.
Francisco Acuña de Figueroa 719 Piso:11 Of: 57
1416 Buenos Aires - Argentina
Tel. +54 11 48614750
gvsarg@gvs.com

Brazil
GVS do Brasil Ltda.
Rodovia Conego Cyriaco Scaranello Pires 251
Jardim Chapadão, CEP 13193-580
Monte Mor (SP) - Brasil
Tel. +55 19 38797200
gvs@gvs.com.br

PRODUCT COLLECTION -

Microbial Count Plate Catalog

Copyright © 2024 GVS ® S.p.A.

All Right Reserved

Printing History: Version 23022024

While every precaution has been taken in the preparation of this catalog, data are subject to change without notice. Results in specific application of GVS products may vary according to the conditions and applications. GVS assumes no responsibility for damage resulting from incorrect use of our products.